

This information is given as an indication. In the continual goal to improve our products, we reserve the right to make any modifications judged necessary



26.5 GHz SMA N/O S.P.4 T. Subminiature SWITCH

Page
1 / 2

OPTIONS : SUPP.DIODES TTL DRIVE

R F CHARACTERISTICS

NUMBER OF WAYS : 4
FREQUENCY RANGE : 0 - 26.5 GHz
IMPEDANCE : 50 Ohms

FREQUENCY (GHz)	0 - 3	3 - 8	8 -12.4	12.4- 18	18 -26.5
V.S.W.R	<= 1.20	1.30	1.40	1.50	1.60
INSERT. LOSS	<= 0.20 dB	0.30 dB	0.40 dB	0.50 dB	0.60 dB
ISOLATION	>= 80 dB	70 dB	60 dB	60 dB	55 dB
AVER.POWER (25°C)	240 W	150 W	120 W	100 W	40 W

ELECTRICAL CHARACTERISTICS

ACTUATOR : NORMALLY OPEN
NOMINAL CURRENT AT 25°C (±10%) : 250 mA
ACTUATOR VOLTAGE (Vcc) : 12V (10.2 to 13V) / NEGATIVE COMMON
TERMINALS : 16 pin double row connector for
connecting to 2.54mm pitch female socket
wrapping or soldering (250°C max/30 sec)

TTL INPUTS (E) - High level : 2.2 to 5.5V / 800µA at 5V
- Low level : 0 to 0.8V / 20µA at 0.8V

MECHANICAL CHARACTERISTICS

CONNECTORS : SMA female per MIL C 39012
LIFE : 10.000.000 cycles per position
SWITCHING TIME (nominal voltage;25°C) : < 10 ms
WEIGHT : < 120 g

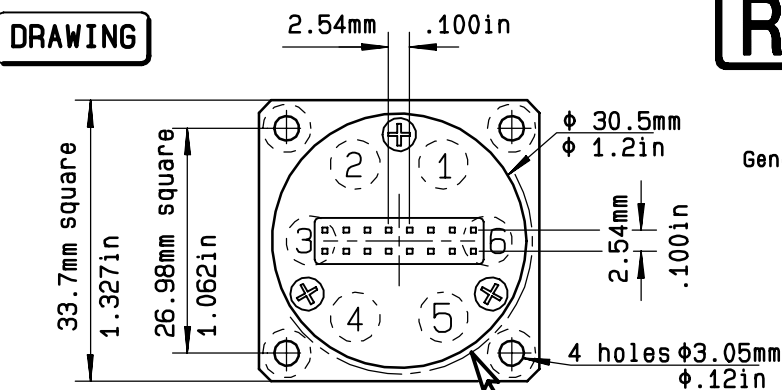
ENVIRONMENTAL CHARACTERISTICS

OPERATING TEMPERATURE RANGE (°C) : -40 , +85
STORAGE TEMPERATURE RANGE (°C) : -55 , +85
VIBRATION - MIL STD 202, meth.204 : 10 - 2000Hz , 20g (operating)
SHOCKS - MIL STD 202, meth.213 : 100 g / 6ms / half-sine (operating)

R591.702.420

Page
2/2

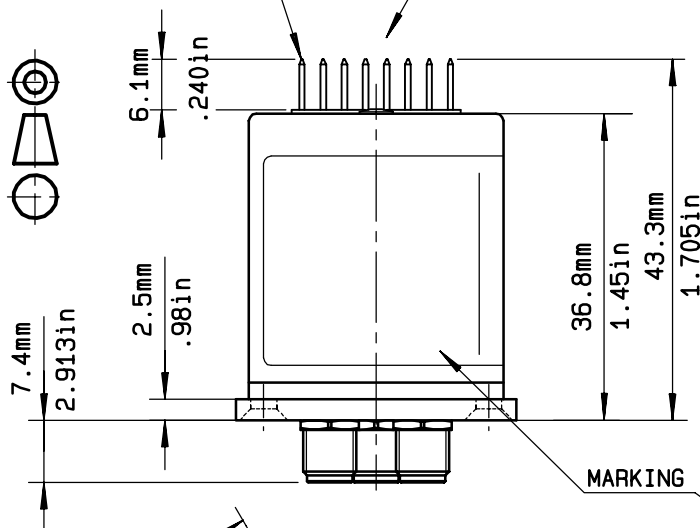
DRAWING



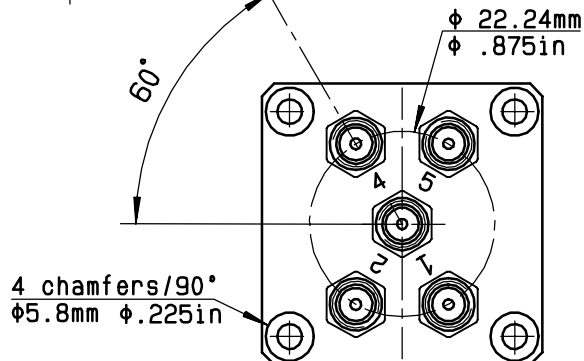
General tolerance: $\pm 0,5\text{ mm}$

16 pin double row connector

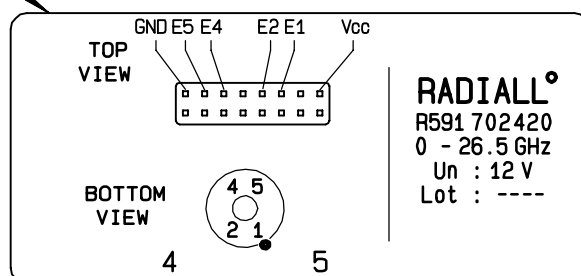
0.64mm (.025in) SQ.



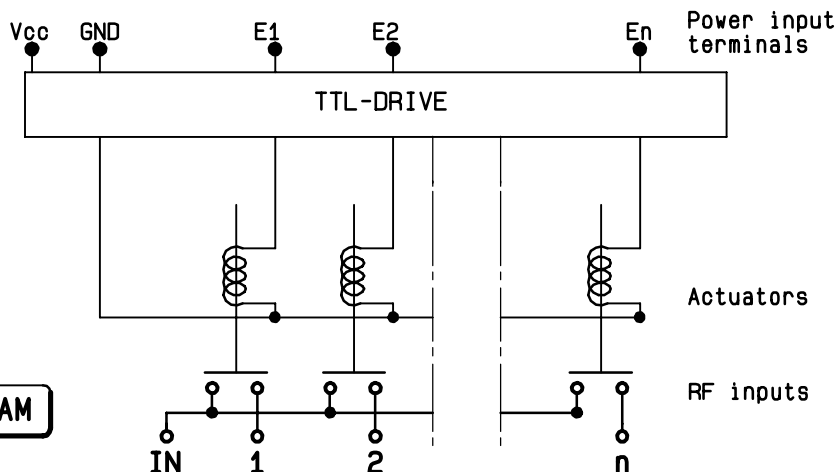
TTL input	RF continuity
E1 = 1	IN \leftrightarrow 1
E2 = 1	IN \leftrightarrow 2
E3 = 1	IN \leftrightarrow 3
E4 = 1	IN \leftrightarrow 4



TOP VIEW (TERMINALS)



SCHEMATIC DIAGRAM



ISSUE 15.Sep.03